



Chyulu Team

De-Snaring Report for July, 2011

Participants

Nterito	Kapina
Julius	Kyalo
Daniel	Lelekoiten
Samuel	Lolchuraki
Joseph	Macharia
James	Mbuthia
John	Wahome
Peter	Wambua
David	Wambua

Areas Patrolled

Algon
Botela
Kari
Kenzili
Kiboko
Kibwezi Forest
Kikunduku
Kisula
Mukurulo
Nooka
Satellite
Sinai
Umani
Usalama
Utu
Wayani

Arrests

10 Arrest(s) this month



Chyulu Team

De-Snaring Report for July, 2011

Illegal Activities

Illegal Activity	No. Incidents	Location	Percentage	Scale	Arrests
Footprints , Fresh Tracks	1	Satellite	3.70%		No
Charcoal Burning , Charcoal Kiln	1	Kiboko	16.67%	Commercial	No
Charcoal Burning , Charcoal Kiln	1	Kikunduku	16.67%	Commercial	Yes
Charcoal Burning , Charcoal Kiln	1	Kikunduku	16.67%	Commercial	No
Charcoal Burning , Dry Wood	1	Kisula	50.00%	Commercial	Yes
Footprints , Fresh Tracks	1	Botela	3.70%	Commercial	No
Footprints , Fresh Tracks	1	Kari	3.70%	Commercial	No
Footprints , Fresh Tracks	1	Kenze	3.70%		No
Footprints , Fresh Tracks	4	Kikunduku	14.81%	Commercial	No
Charcoal Burning , Charcoal Kiln	2	Botela	33.33%	Commercial	No
Footprints , Fresh Tracks	1	Kisula	3.70%	Commercial	No
Poaching , Snaring - Medium Game	1	Satellite	25.00%	Commercial	No
Footprints , Fresh Tracks	1	Sinai	3.70%	Commercial	No
Logging , Dry Wood	1	Kikunduku	50.00%	Commercial	No
Logging , Wet Wood	1	Kiboko	50.00%	Commercial	No



Chyulu Team

De-Snaring Report for July, 2011

Illegal Activities

Illegal Activity	No. Incidents	Location	Percentage	Scale	Arrests
Logging , Wet Wood	1	Kisula	50.00%	Commercial	No
Poachers' Hideout(s) , Fresh Boma	3	Kisula	50.00%	Commercial	No
Poachers' Hideout(s) , Old Boma	1	Kikunduku	100.00%	Commercial	No
Poaching , Snaring - Medium Game	1	Algon	25.00%	Subsistence	No
Poaching , Snaring - Medium Game	1	Kari	25.00%	Commercial	No
Footprints , Fresh Tracks	1	Kisula	3.70%		No

* 'Percentage' indicates the overall percentage occurrence (encountered by all de-snaring teams) of that particular illegal activity during the selected month.

Snares Collected

Snare Type	Snare Size	Snare Description	No. Confiscated
Thin Wire	Small	Scattered	16
Thin Wire	Small		1
Thin Wire	Medium	Scattered	14
Thin Wire	Medium	Line	9

Total Snares Collected: 40

Monthly Summary



Chyulu Team

De-Snaring Report for July, 2011

Monthly Summary

The team camped at both Kenze and Utu bases. Due to success during last months operation another joint operation between Chyulu team and KWS Chyulu platoon was organized. This operation was carried out at Kikunduku, Kisula, Satellite, Mbotela, Sinai, Kibwezi Forest, Umani, KARI and Kiboko areas. The joint operation discovered 2 elephant shooting platforms at Umani area and destroyed them. Within Kibwezi forest the team arrested 2 poachers, caught snaring along the water pipeline. It was also established that they worked at Kibwezi Water Company.

At Kikunduku area the teams managed to arrest 7 people, among them 5 charcoal burners and 2 poachers. The level of illegal activities continues to be noticed around Kikunduku and therefore it remains vital hotspot that needs regular visiting. At Kisula area has high levels of illegal activities so the team has made this area a priority as illegal activities seem to carry on. With that said the numbers of arrests have dropped from 8 last month, to 1 this month indicating that the Team may have had a deterring effect to those intending to carry out illegal activities.

The team also visited Kiboko and KARI areas whereby 1 arrest was made at Kiboko area, and a new method of vegetation destruction was identified. Harvesting of dome palm leaves is now a big business, the Team has seen some heavy destruction of these trees.

Community Outreach

Likoni self help group was visited, with the intention of advising them on the best way to improve community livelihood through fish farming as an alternative source of protein. This project will provide alternative source of income and also reduce over reliance on bush meat from the park. Another community group called Wasya Wa Kaunguni was also visited, a group of traditional dancers who entertain tourists at eco lodges around Chyulu. They requested to extend the same to Umani lodge. During the visit conservation knowledge was imparted.



Chyulu Team

De-Snaring Report for July, 2011



Likoni Self Help Group projects



Likoni Self Help Group in Soto Area



Chyulu Team

De-Snaring Report for July, 2011



Soto farming project



Arrest of Bush meat poacher at Kikunduku area



Chyulu Team

De-Snaring Report for July, 2011



Wood for charcoal kilns

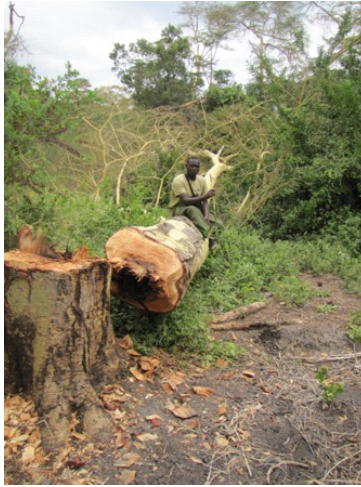


lifting snares at Umani area



Chyulu Team

De-Snaring Report for July, 2011

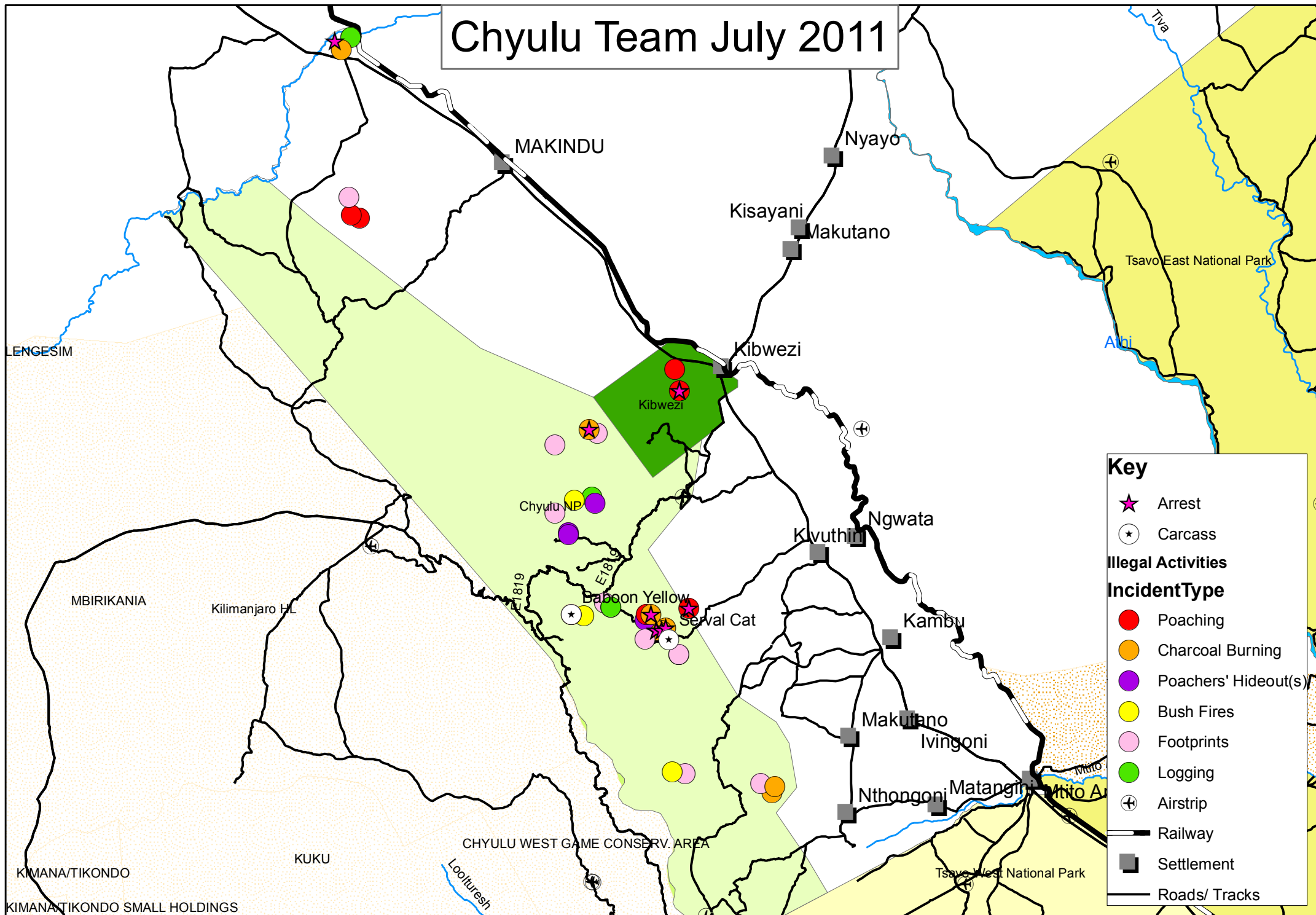


Illegal logging



Shooting platforms at Umani

Chyulu Team July 2011



LENGESIM

MBIRIKANIA

Kilimanjaro HL

KIMANA/TIKONDO

KUKU

CHYULU WEST GAME CONSERV. AREA

Looluresh

Chyulu NP

Baboon Yellow

Serval Cat

E1819

E1819

Kibwezi

Makutano

Ivingoni

Nthongoni

Matangiri

Mito A

Tsavo West National Park

Tsavo East National Park

Tiba

Albi

Nyayo

Kisayani

Makutano

Kibwezi

Ngwata

Kivuthi

Kambu

⊕

⊕

⊕

⊕

⊕

⊕

MAKINDU